

CIET

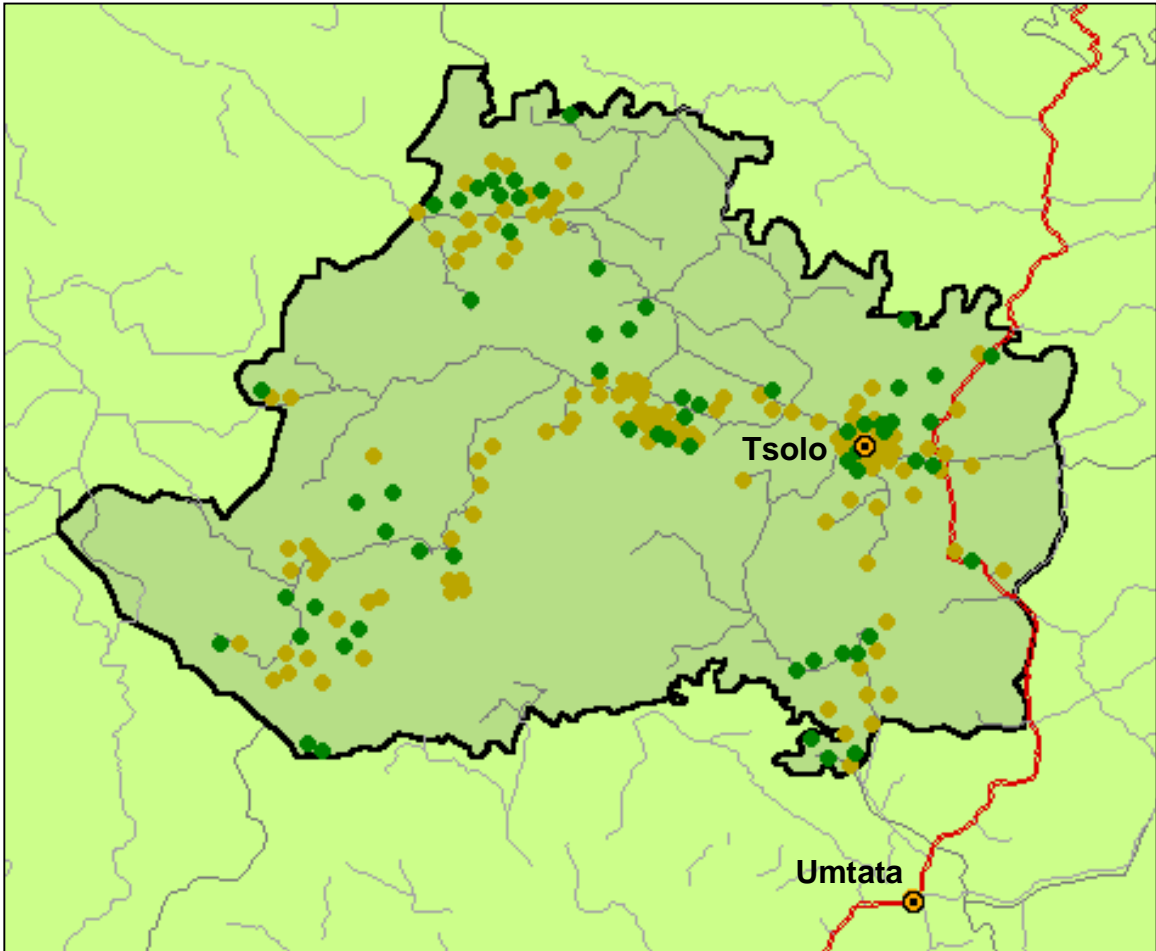
www.ciet.org
building the community voice into planning

Miscellaneous
MI-ZA-wc2-00-a

South Africa

***Year 2000 calendar (Tsolo) –
Wild Coast spatial development initiative***

Tsolo District - Year 2000 Calendar



Map of Tsolo District showing service and production related small businesses

SERVICE BUSINESSES	■
Spaza Shop	32
General Dealer	15
Shebeen	15
Taxi	10
Garage	9
Vendor	9
Restaurant/Café	9
Bottle Store	8
Hairdresser	4
Bike Repair	3
Undertaker	3
Photographer	3
Shoe Repair	2
Traditional Medicine	1
Welder	1
Total	124 (67%)

PRODUCTION BUSINESSES	■
Brickmaking	17
Fruits and Vegetables	12
Arts and Crafts	12
Livestock	11
Food	9
Dressmaker	1
Total	62 (33%)

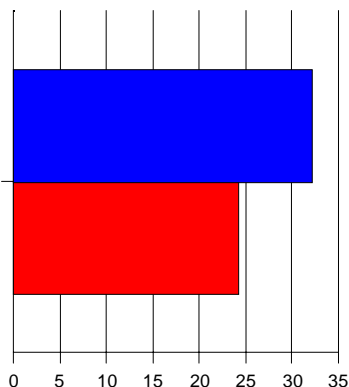


Schools visited: 5
Students surveyed: 393

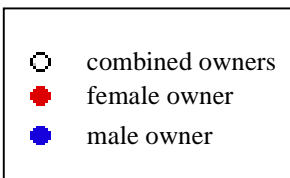
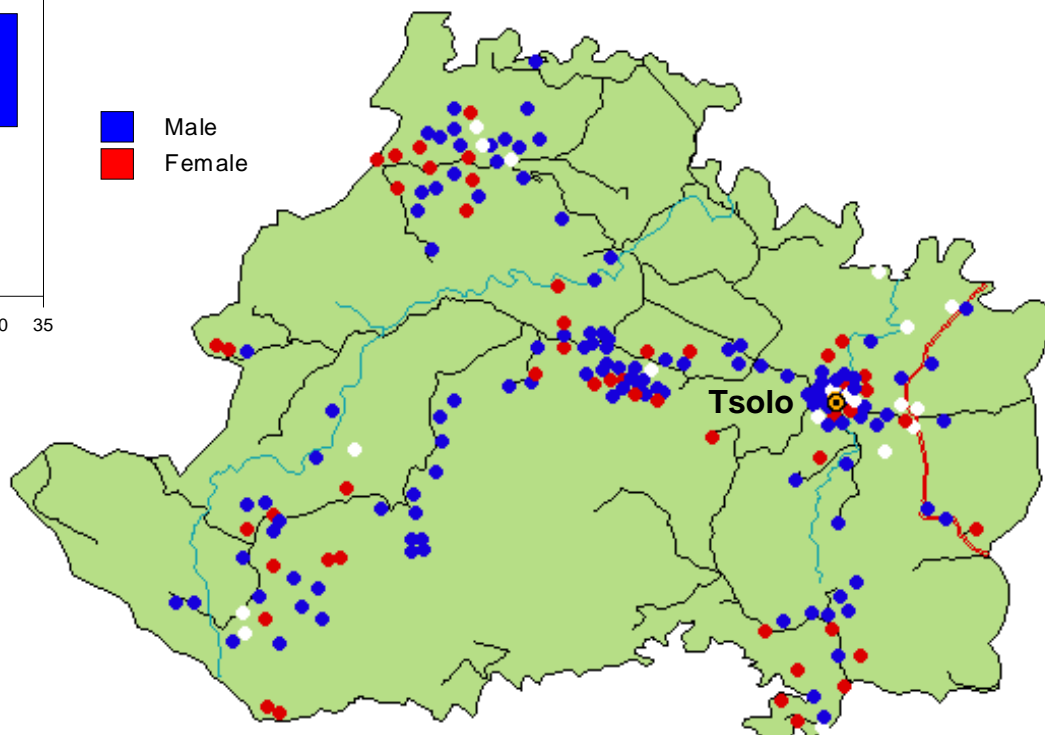
CIET involves women and men in fact finding and analysis, so their separate concerns are voiced and solutions for both are built into planning.

Small businesses and owner's sex

% who have considered starting their own business



The most common types of businesses owned by women are shebeens, spaza shops, vendors, arts and crafts, and fruits and vegetables.



Business	Male Owned	Female Owned	Combined Owners
Service related	65%	25%	10%
Production related	58%	31%	11%

January

43% of grade 12 students in the Tsolo District think girls have a better chance of making a livelihood in their community.

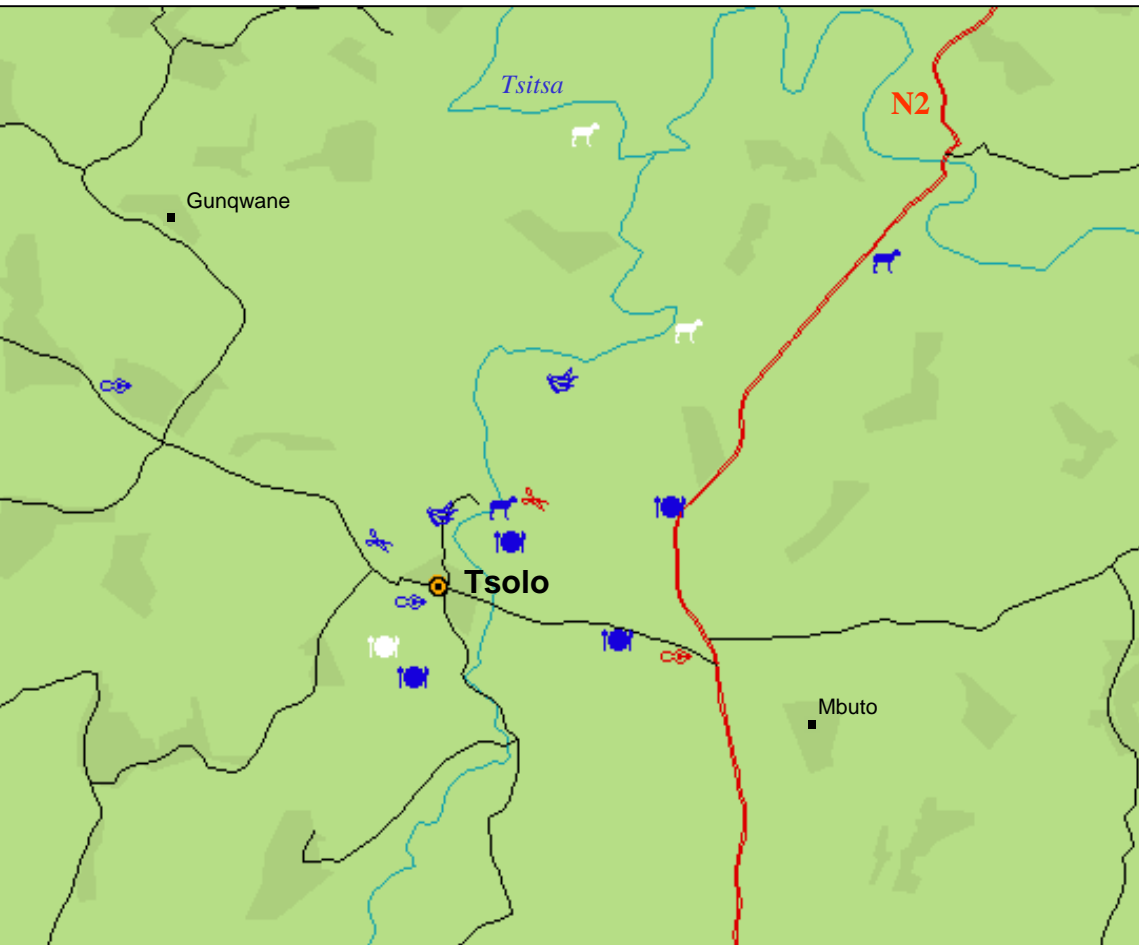
Sunday	Monday	Tuesday	Wednesday	Thursday	Friday	Saturday
						New Year's Day 1
2	Public Holiday 3	4	5	6	7	8
9	10	11	12	13	14	15
16	17	Start of first school term (Eastern Cape) 18	19	20	21	22
23	24	25	26	27	28	29
30	31					

Corruption in public administrations forces people to pay twice: once officially, through taxes and user fees, and again through unofficial charges. In a CIET study in Bolivia 70% of people said they had to bribe a civil servant to obtain a birth certificate.

Tsolo production businesses

Commercial farming as an income generating activity has not been specifically covered by this survey

What is the single most common type of production business?
 Which businesses from the legend are missing on the map?
 Which new businesses are needed in this area?



- Arts and Crafts
- Brickmaking
- Dressmaker
- Fishing
- Food
- Fruits and Vegetables
- Gardening
- Livestock

The colour of the symbol represents the owner's sex

- Male Owner
- Female Owner
- Combined Owners

February

91% of grade 12 students in the Tsolo District claim that a lack of finances is all or part of the reason they have not considered starting their own business.

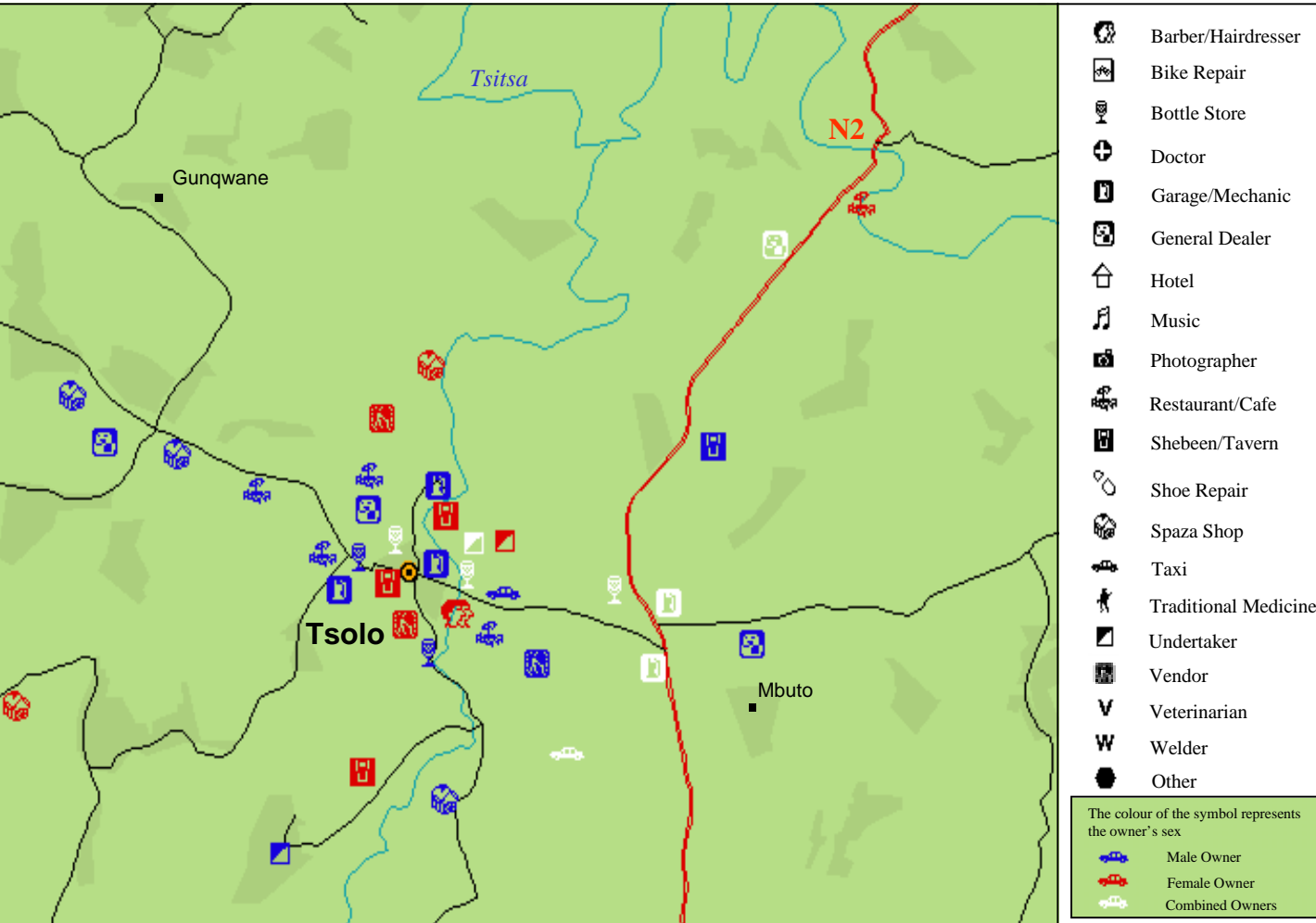
Sunday	Monday	Tuesday	Wednesday	Thursday	Friday	Saturday
		1	World Wetland's Day 2	3	4	5
6	7	8	9	10	11	12
13	14	15	16	17	18	19
20	21	22	23	24	25	26
27	28	29				

Tsolo service businesses

What do you notice about the grouping and locations of businesses?

What are some reasons why it is like this?

If you were to start your own business in this area, where would you locate it?



March

67% of grade 12 students in the Tsolo District think returning migrants who were retrenched will affect their chances of a future livelihood.

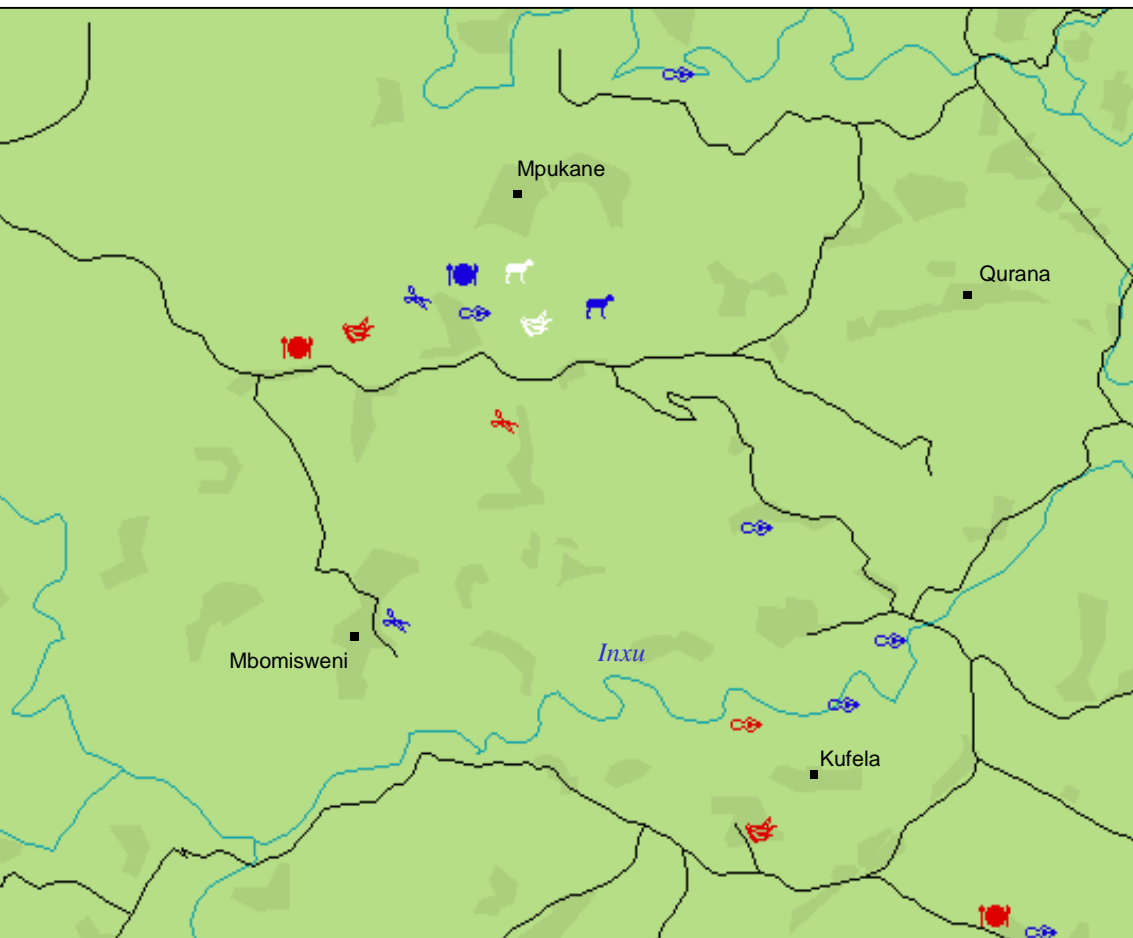
Sunday	Monday	Tuesday	Wednesday	Thursday	Friday	Saturday
			1	2	3	4
5	6	7	8	9	10	11
12	13	14	15	16	17	18
19	20	Human Rights Day	22	23	24	25
26	27	28	29	30	31	

National River's Day (Friday 16)
End of first school term (Eastern Cape) (Friday 24)

Young people are often involved in CIET social audits, including local economic development, environmental justice, human rights and prevention of sexual violence.

Northern Tsolo District production businesses

Are production businesses located in the same areas as service businesses?
 Why are there areas with very few production businesses?
 If you were to start your own business, would you start a production business?



- Arts and Crafts
- Brickmaking
- Dressmaker
- Fishing
- Food
- Fruits and Vegetables
- Gardening
- Livestock

The colour of the symbol represents the owner's sex

- Male Owner
- Female Owner
- Combined Owners

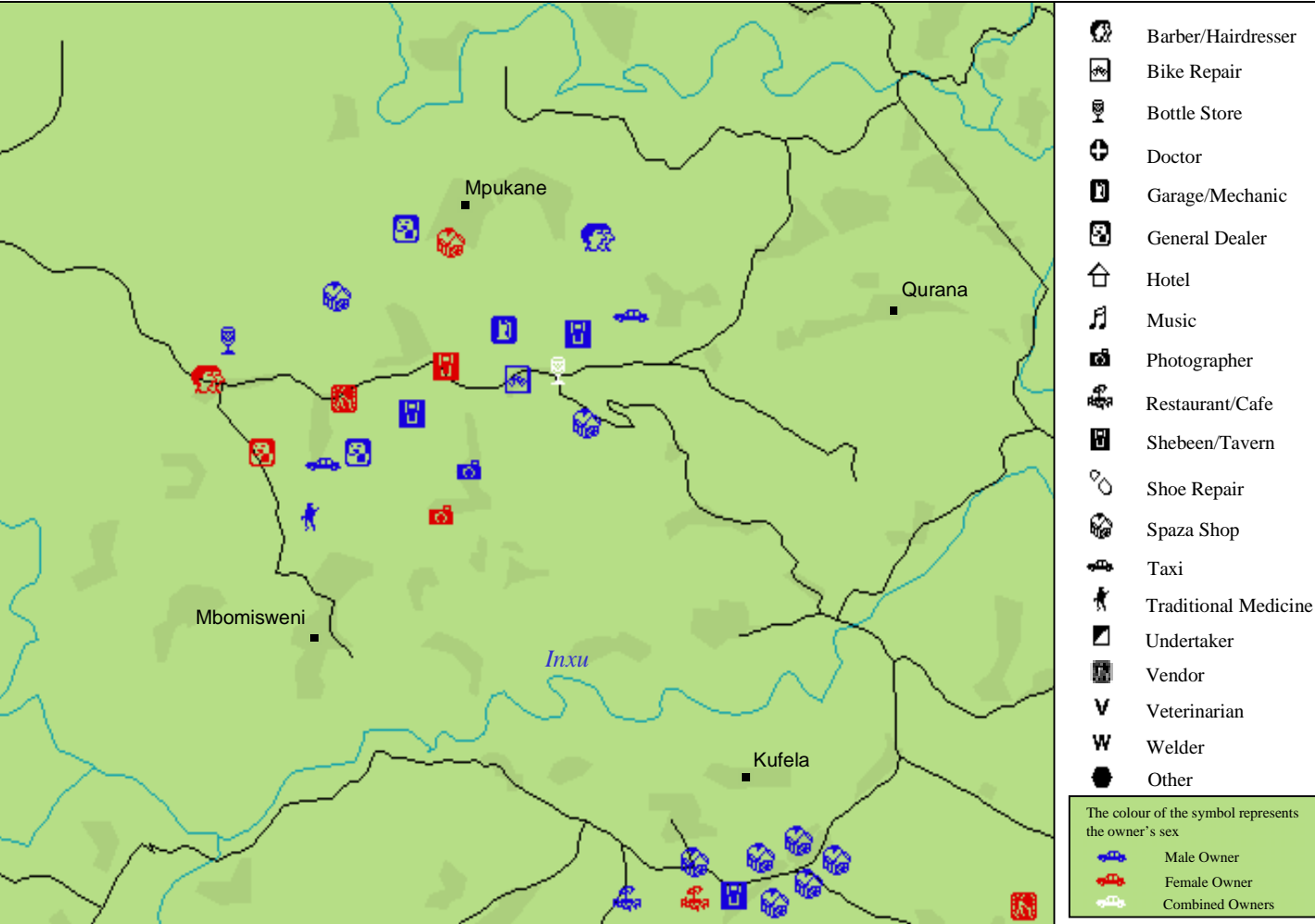
April

Only 28% of grade 12 students in the Tsolo District see the making and selling of crafts as a small business.

Sunday	Monday	Tuesday	Wednesday	Thursday	Friday	Saturday
						1
2	3	4	5	6	7	8
9	Start of second school term (Eastern Cape)	10	11	12	13	14
16	17	18	19	20	Good Friday	21
23	Family Day	24	25	26	Freedom Day	27
28	29					
30						

Northern Tsolo District service businesses

Do there appear to be more male or female owned businesses?
 Are there any kinds of businesses owned only by males?
 If you were to start your own business, would you start a service business?



May

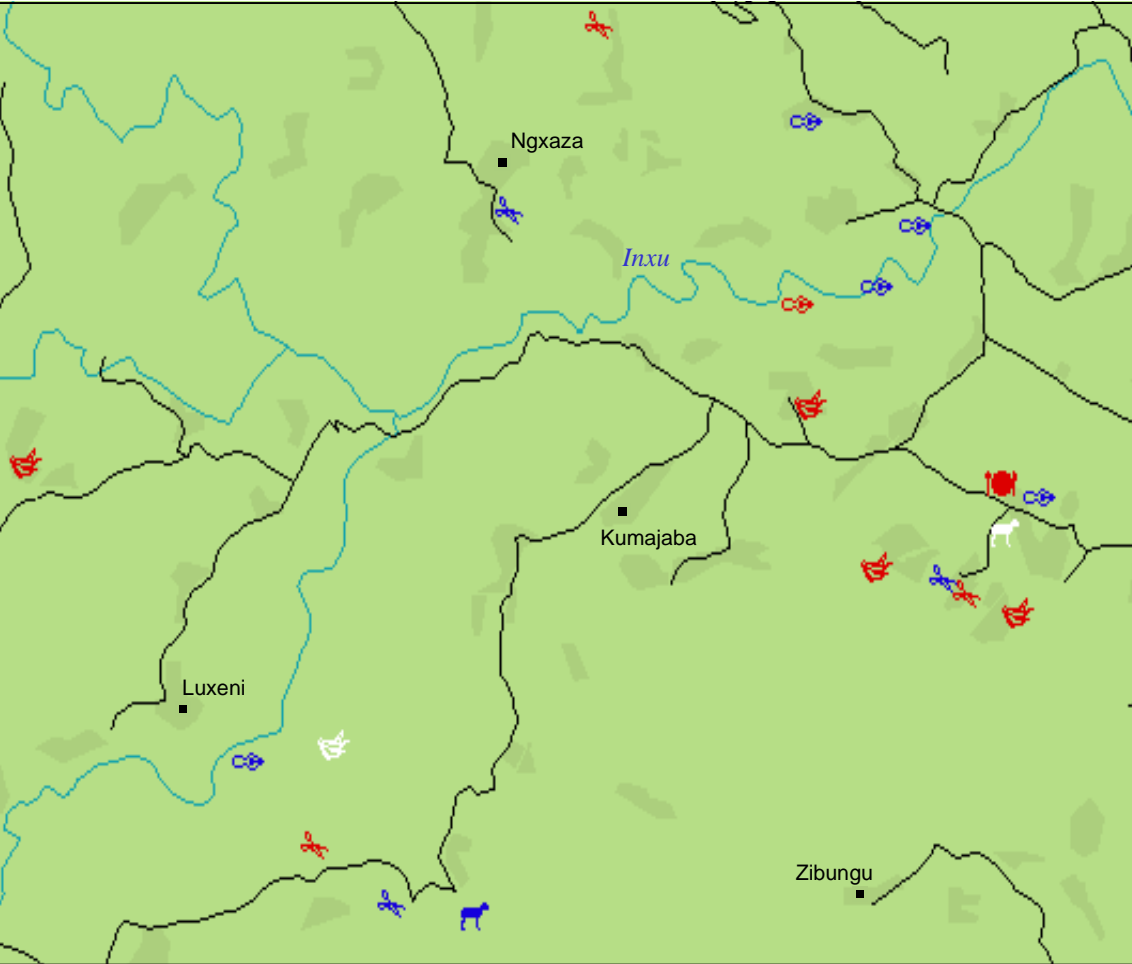
"Since we are finishing high school, we think the Department of Education must utilize ABET to teach us how we can start and sustain businesses, and for those in the lower grades they should make it part of the curriculum"

-Grade 12 student from Tandisizwe Senior Secondary School

Sunday	Monday	Tuesday	Wednesday	Thursday	Friday	Saturday
	Worker's Day					
	1	2	3	4	5	6
7	8	9	10	11	12	13
14	15	16	17	18	19	20
21	22	23	24	25	26	27
28	29	30	31			

Central Tsolo District production businesses

Why are there areas with very few production businesses?
 What kind of production businesses are needed in this area?
 If you were to start a business in this area, what kind would you start?



- Arts and Crafts
- Brickmaking
- Dressmaker
- Fishing
- Food
- Fruits and Vegetables
- Gardening
- Livestock

The colour of the symbol represents the owner's sex

- Male Owner
- Female Owner
- Combined Owners

June

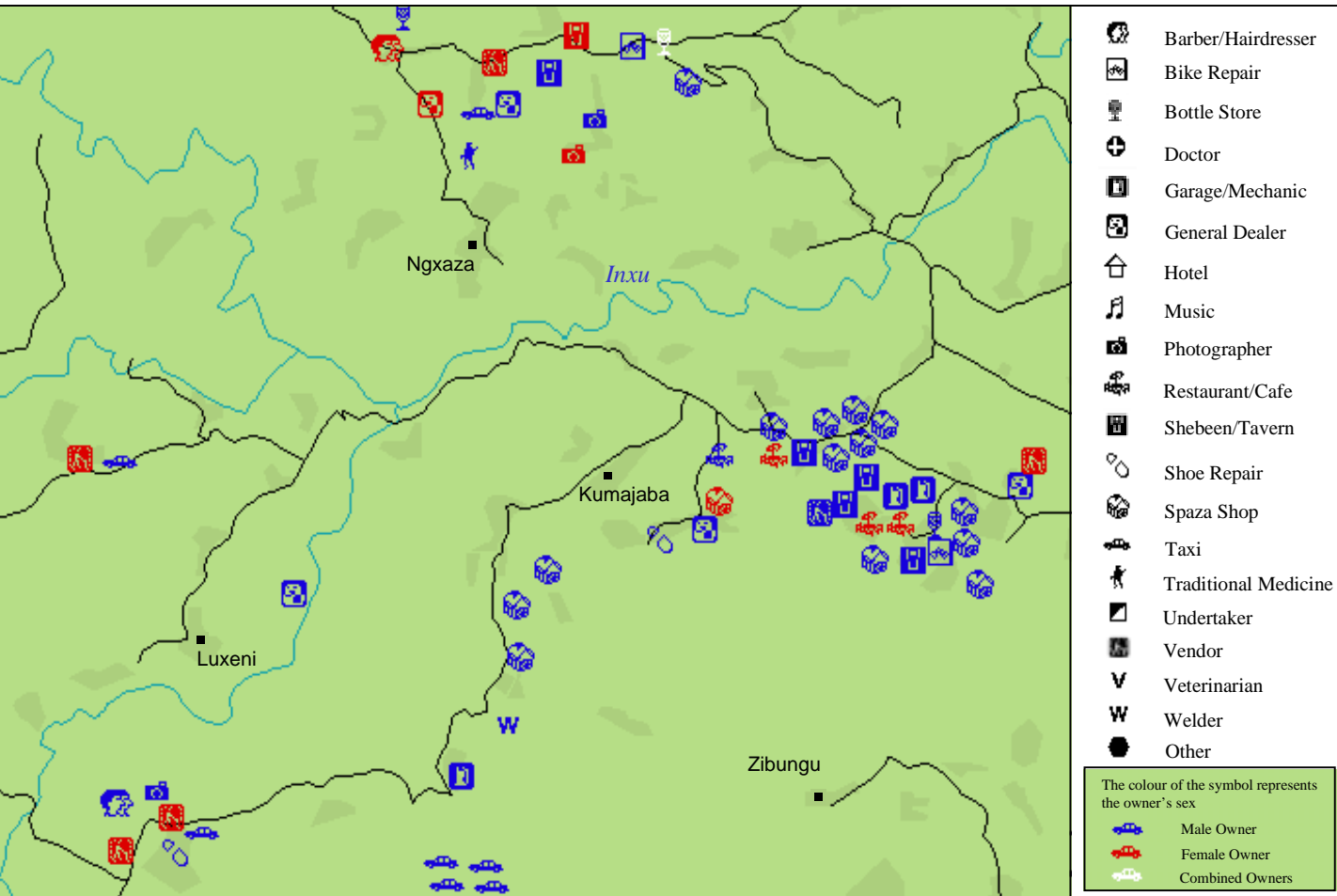
"More businesses are owned by men because many women are intimidated by crime. The government should provide better security."
 -Grade 12 student from Jongilizwe Secondary School

Sunday	Monday	Tuesday	Wednesday	Thursday	Friday	Saturday
				1	2	3
4	World Environment Day	5	6	7	8	9
10	11	12	13	14	15	Youth Day
16	17	18	19	20	21	22
23	24	25	26	27	28	29
30						

CIET counterparts are usually government ministries, local and regional authorities. In the Wild Coast, CIET works with the Ecsecc and the Department of Education.

Central Tsolo District service businesses

Do similar businesses seem spread out, or do they seem to cluster together?
 What are some reasons why it is like this?
 If you were to start your own business in this area, where would you locate it?



July

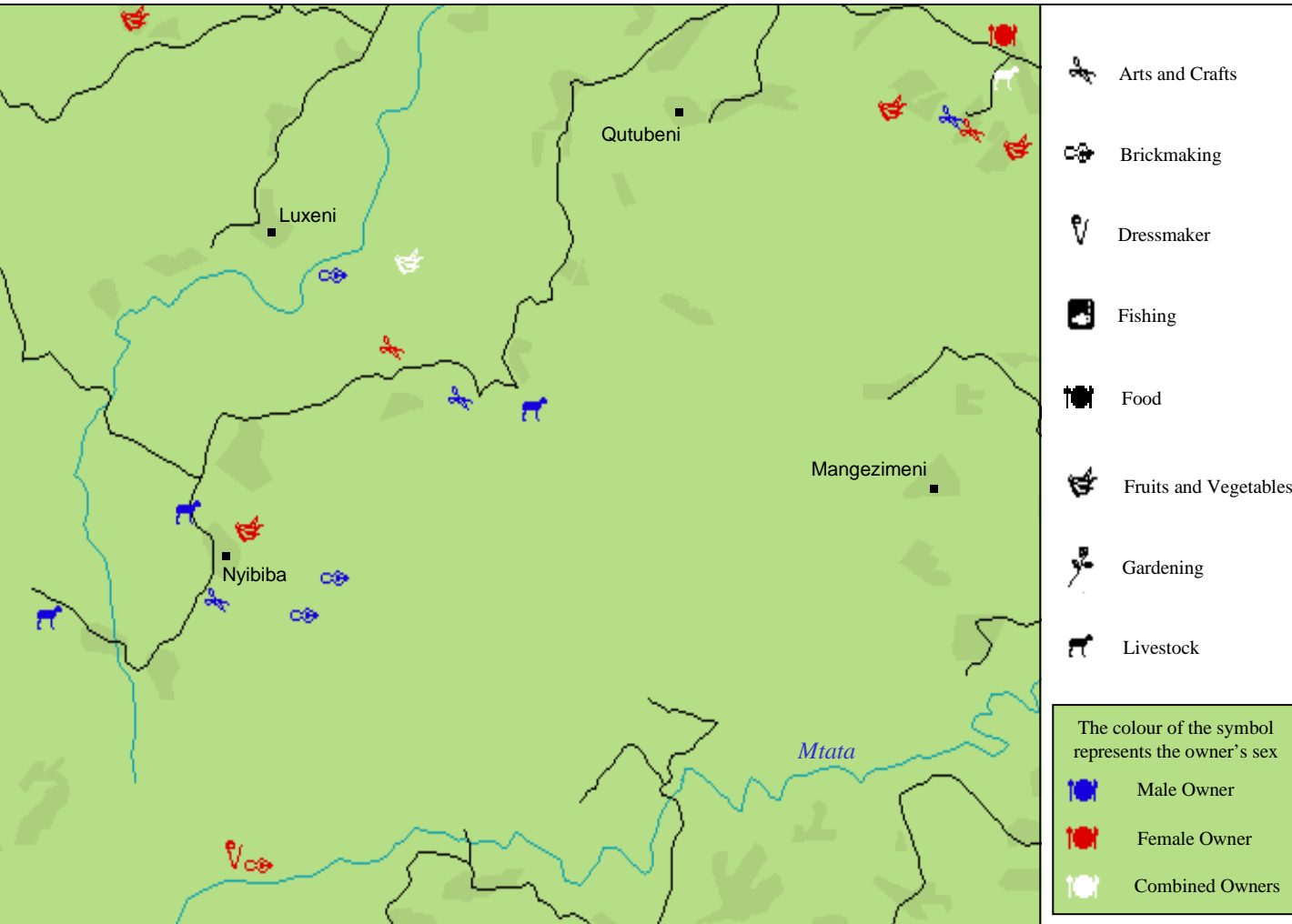
Many students suggest people lack creativity and just copy each other. They feel more information should be accessible about different kinds of businesses.

Sunday	Monday	Tuesday	Wednesday	Thursday	Friday	Saturday
						1
2	3	4	5	6	7	8
9	10	11	12	13	14	15
16	Start of third school term (Eastern Cape)	17	18	19	20	21
22	23	24	25	26	27	28
29	30	31				

In Gauteng, CIET worked with the local government and police to see what happens to rape cases that are reported. For every 400 rapes, only one rapist gets convicted.

Southwestern Tsolo District production businesses

What kinds of production businesses are not found in this area?
 If you were to start a new business in this area, what kind would you start?
 Where would you locate it?



August

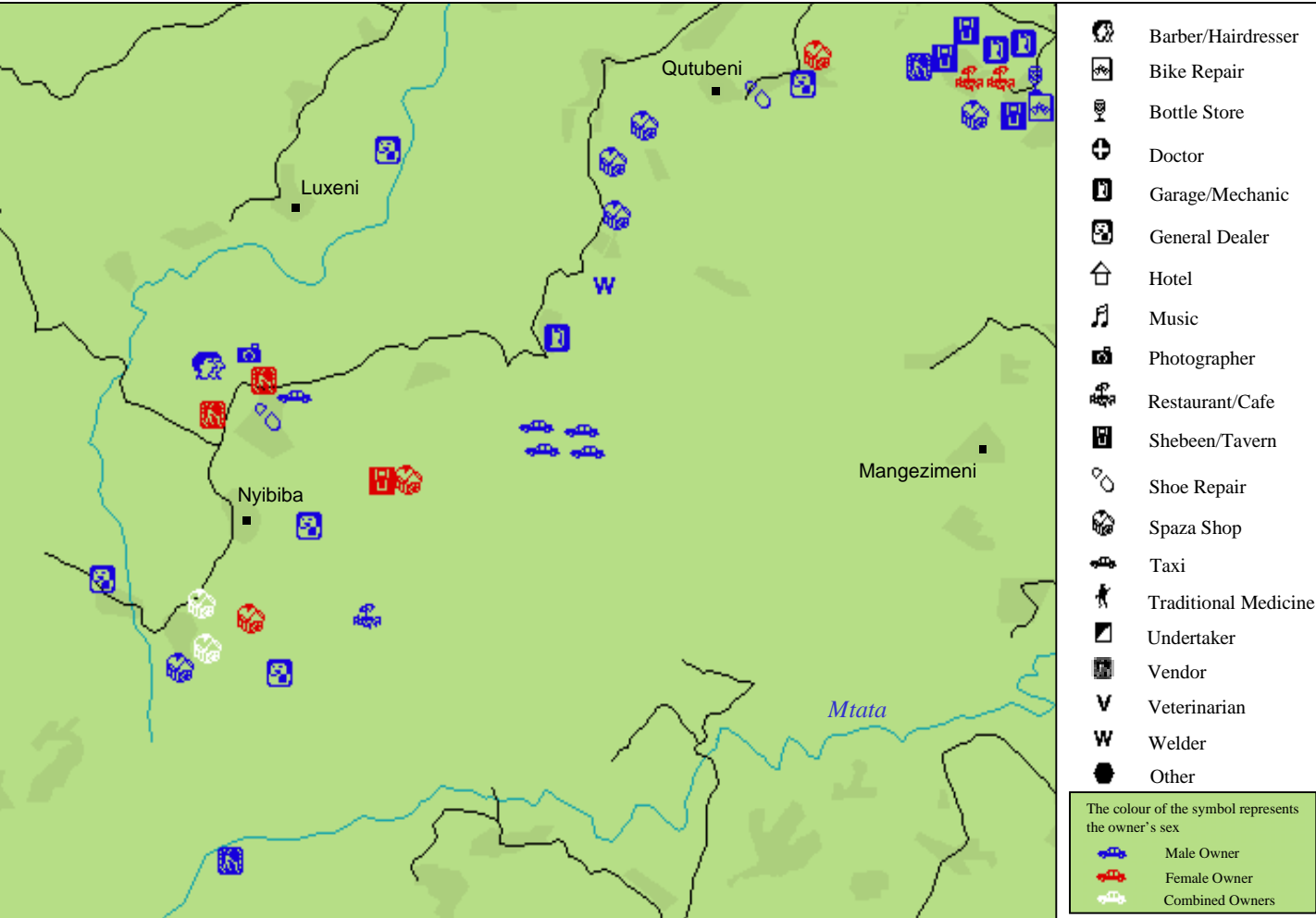
"Production is low because many of the men are away and there are no financial resources to buy the necessary equipment."

-Grade 12 student from Dinizulu Secondary School

Sunday	Monday	Tuesday	Wednesday	Thursday	Friday	Saturday
		1	2	3	4	5
6	7	8	National Women's Day	10	11	12
13	14	15	16	17	18	19
20	21	22	23	24	25	26
27	28	29	30	31		

Southwestern Tsolo District service businesses

Which businesses from the legend are missing on the map?
 What are some new businesses that are needed in this area?
 If you were to start your own business, what kind of business would you start?



September

Many grade 12 students feel that crime, bad customer relations, lack of financial management skills, and lack of information on how to sustain businesses are the main factors that stop development in their communities.

Sunday	Monday	Tuesday	Wednesday	Thursday	Friday	Saturday
					National Arbor Day 1	2
3	4	5	6	7	8	9
10	11	12	13	14	15	16 World Ozone Day
17	18	19	20	21	22 End of third school term (Eastern Cape)	23
Heritage Day 24	Public Holiday 25	26	World Tourism Day 27	28	29	30

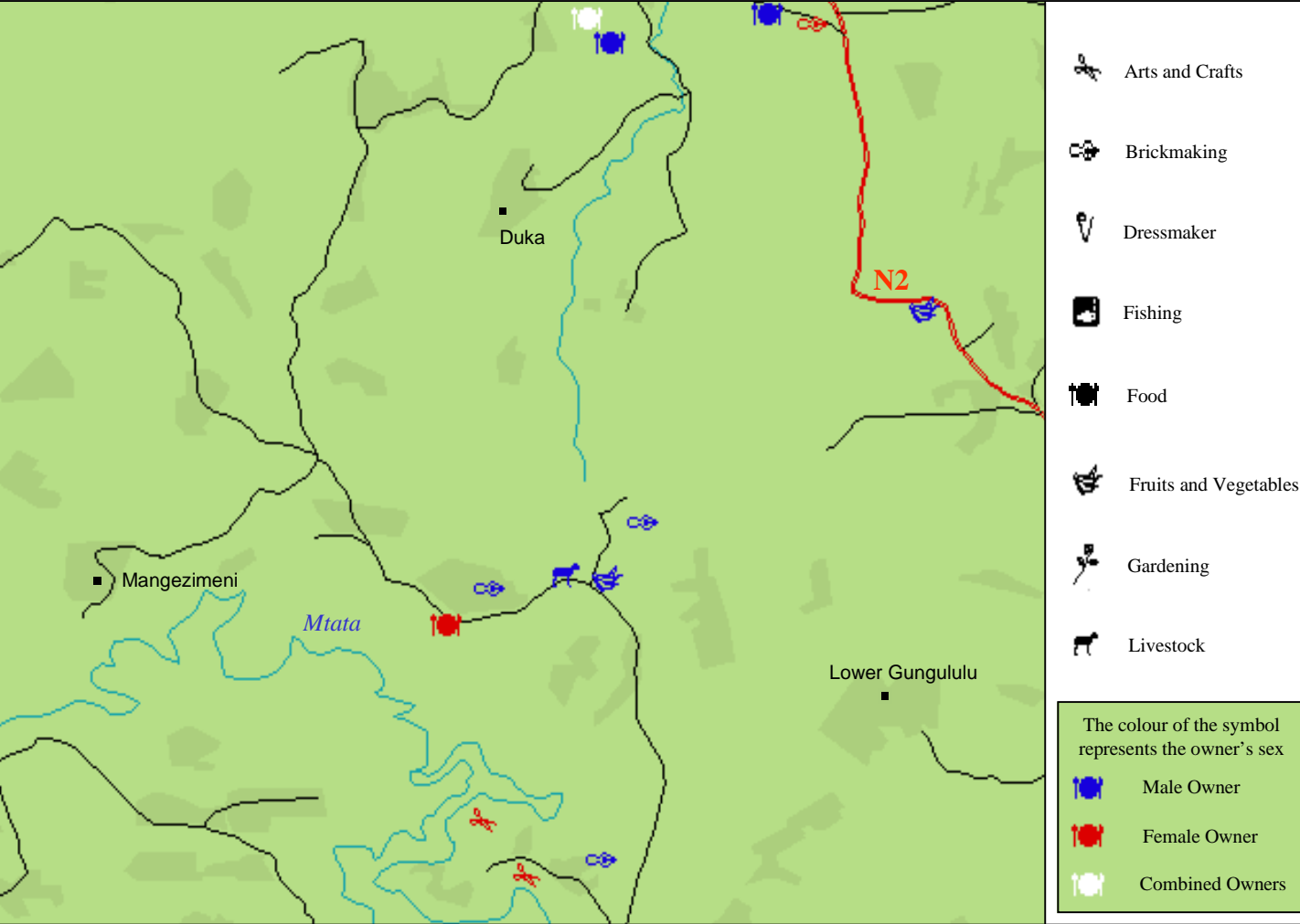
Unofficial charges, teacher absenteeism and misuse of public resources represent a big barrier to achieving universal access to primary education worldwide. In Pakistan, CIET found many girls had to bribe their teacher to come to school.

Southeastern Tsolo District production businesses

Why are there areas with very few production businesses?

What kind of production businesses are needed in this area?

If you were to start your own business in this area, what kind would you start?



October

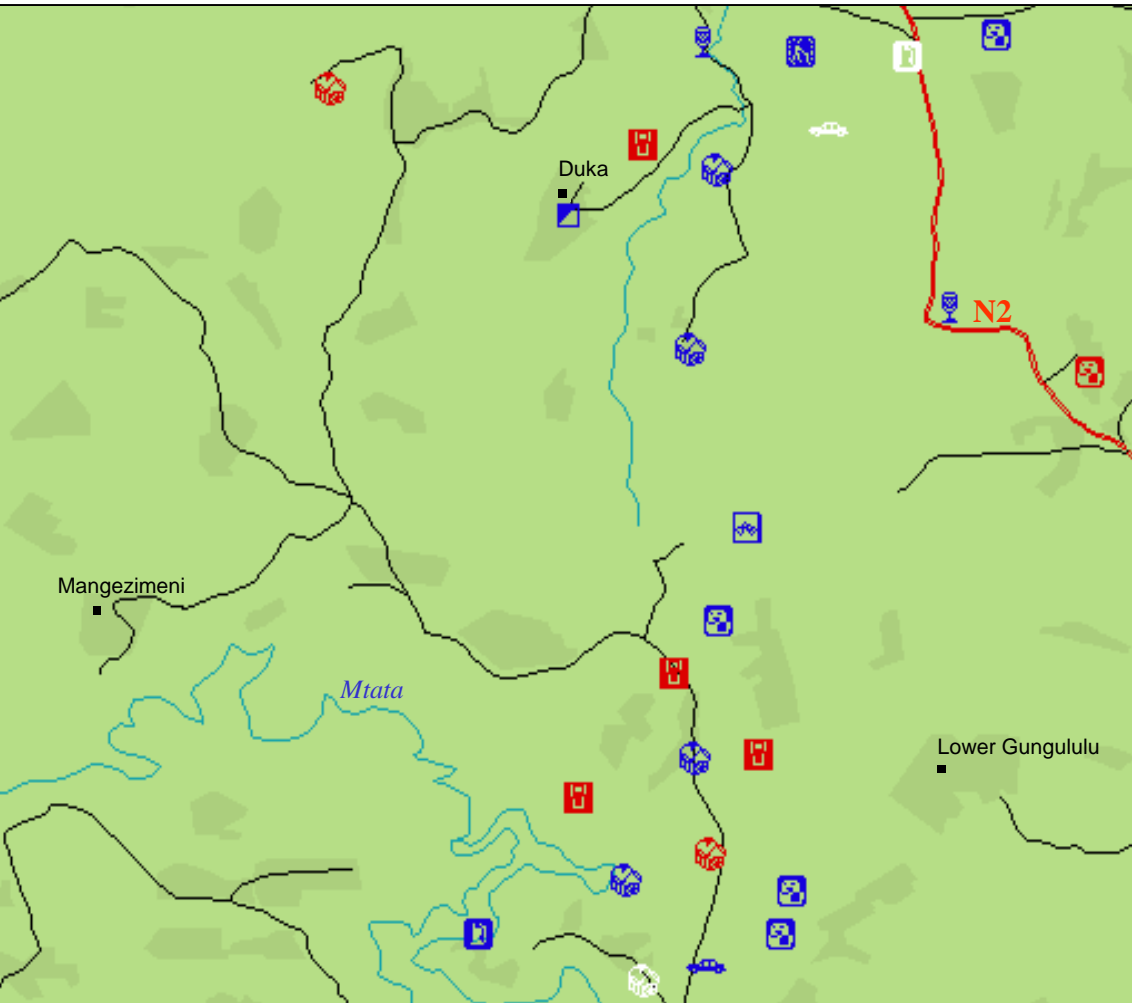
10% of grade 12 students in the Tsolo District think they will live in their community after leaving school (23% did not know if they would).

Sunday	Monday	Tuesday	Wednesday	Thursday	Friday	Saturday
1	Start of fourth school term (Eastern Cape) 2	3	4	5	6	7
8	9	10	11	12	13	14
15	16	17	18	19	20	21
22	23	24	25	26	27	28
29	30	31				

Corruption in the Customs services is a problem for many exporters and importers. In Bolivia and Nicaragua CIET involved businesses to document the problem and to come up with solutions to counter petty corruption.

Southeastern Tsoilo District service businesses

What businesses from the legend are missing on this map?
 Is there a lack of service businesses in this area?
 If so, what kind of service businesses are needed in this area?



- Barber/Hairdresser
- Bike Repair
- Bottle Store
- Doctor
- Garage/Mechanic
- General Dealer
- Hotel
- Music
- Photographer
- Restaurant/Cafe
- Shebeen/Tavern
- Shoe Repair
- Spaza Shop
- Taxi
- Traditional Medicine
- Undertaker
- Vendor
- Veterinarian
- Welder
- Other

The colour of the symbol represents the owner's sex

- Male Owner
- Female Owner
- Combined Owners

November

93% of grade 12 students in the Tsoilo District feel further education affects their chances of a future livelihood.

Sunday	Monday	Tuesday	Wednesday	Thursday	Friday	Saturday
			1	2	National Marine Day 3	4
5	6	7	8	9	10	11
12	13	14	15	16	17	18
19	20	21	22	23	24	25
26	27	28	29	30		

Results from the second cycle:

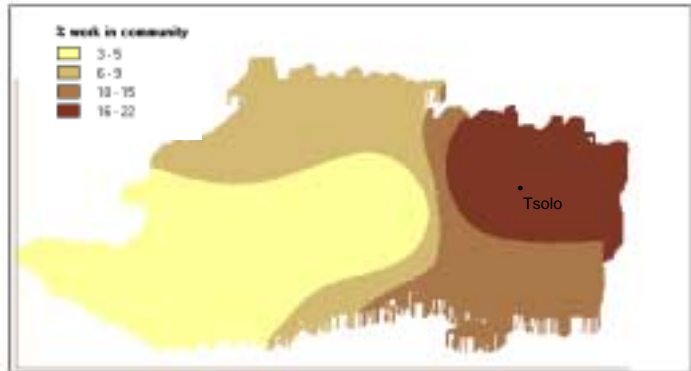
Students need to take the initiative to start their own business after leaving school and generate their own income. Although an increase in skills is necessary, a change in perception is also needed: often students have skills in areas that they don't consider business related.



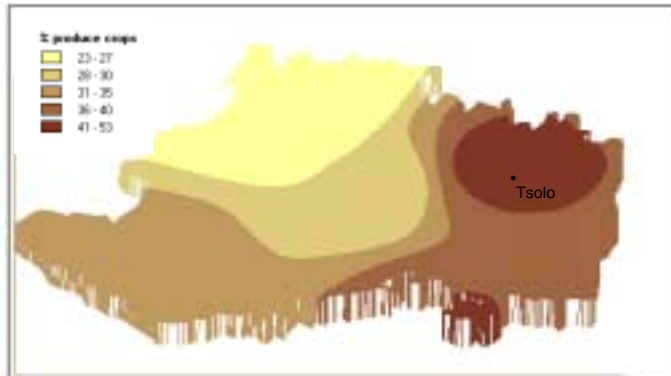
Percent of grade 12 students who have considered starting their own business



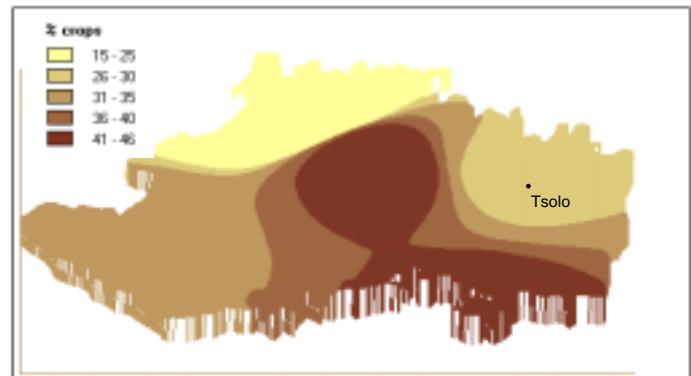
Percent of grade 12 students who feel the kind of work they are looking for is available in their community



Percent of grade 12 students who feel they could produce crops



Percent of grade 12 students who see making and selling of crops as a small business

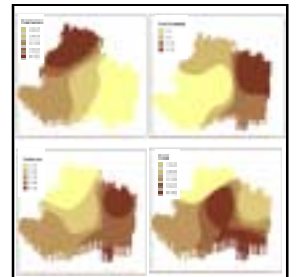
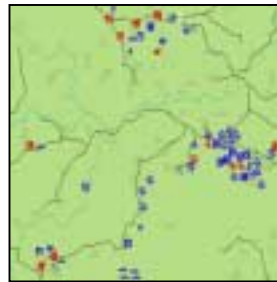
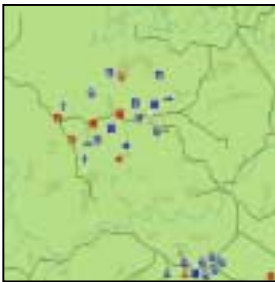
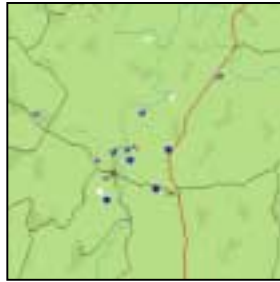
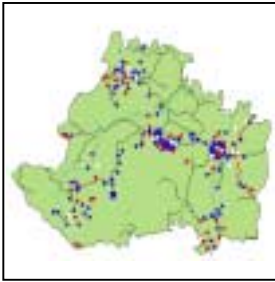


December

The contours in these maps come from a set of sentinel communities that are weighted to be proportional to the population. If 30% of the map area is a certain colour, then 30% of the population falls within the range represented by that colour.

Sunday	Monday	Tuesday	Wednesday	Thursday	Friday	Saturday
					1	2
3	4	5	6	7	8 End of fourth school term (Eastern Cape)	9
10	11	12	13	14	15	16 Day of Reconciliation
17	18	19	20	21	22	23
24 Christmas Day	25	26 Day of Goodwill	27	28	29	30
31						

Tsolo District - Year 2000 Calendar



If you want to start your own business, contact the SMME Desk of the Department of Finance. There are two in the region, and the head office in Bisho:

Umtata
Tel: 047 531 1191
Mrs C. Kekana

Mount Ayliff
Tel: 039 727 3273
Mr H. Majeke

Bisho
Tel: 040 635 2184
Mr K. Radu

The SMME Desk will be able to assist you with any particular information that you need to start a business. It will tell you where you can get training, how and where to access credit, and offer information about the best options and opportunities in the region.

If you want to know more about adult education projects in your region, contact ABET (Adult Basic Education and Training) in Bisho. Tel: 040 635 0357.

